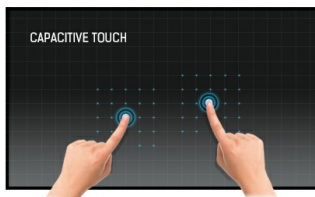


Open Frame PCAP 30-point Touch monitor with AG coating equipped with a foam seal finish for seamless integration

The ProLite TF3215MC-B2AG uses PCAP Touch technology and is built into an eye-catching bezel with edge-to-edge anti-glare coated glass drastically reducing ambient reflections in high-brightness environments without compromising the sharpness and clarity of the image. The rugged bezel equipped with a foam seal finish supports seamless integration into kiosks and provides IP65 rating resulting in dust and water resistance from the front making it perfect for high use public facing applications. Landscape and portrait orientation ensures flexible mounting possibilities in almost any installation. The TF3215MC-B2AG is the ideal solution for kiosk integrators, industrial environments, control rooms and interactive multimedia.



Touch technology - Capacitive

This technology uses a sensor-grid of micro-fine wires integrated into the glass that covers the screen. Touch is detected because electrical characteristics of the sensor grid change when human finger is placed on the glass. Thanks to the glass overlay this technology is highly durable, and the touch function remains unaffected even if the glass is scratched. It offers perfect picture performance and will work with human finger (also latex gloved) and stylus-pen.



Foam Seal

A foam seal finish (8mm) around the monitor ensures seamless integration and optimal dust protection.

01 DISPLAY CHARACTERISTICS

Design	Open Frame
Diagonal	31.5", 80cm
Panel	VA, Anti-Glare coating
Native resolution	1920 x 1080 (2.1 megapixel Full HD)
Aspect ratio	16:9
Panel brightness	500 cd/m ²
Brightness	425 cd/m ² with touch
Light transmittance	85%
Static contrast	3000:1 with touch
Response time (GTG)	8ms
Viewing zone	horizontal/vertical: 178°/178°, right/left: 89°/89°, up/down: 89°/89°
Colour support	16.7mln 8bit
Horizontal Sync	30 - 68kHz
Viewable area W x H	698.4 x 392.8mm, 27.5 x 15.5"
Pixel pitch	0.3637mm
Bezel colour and finish	black
Reommended usage	retail

02 TOUCH

Touch technology	projective capacitive
Touch points	30 (HID, only with supported OS)
Touch accuracy	+ - 2mm
Touch method	finger, glove (latex), capacitive stylus
Touch interface	USB
Supported operating systems	All iiyama monitors are Plug & Play and compatible with Windows and Linux. For details regarding the supported OS for the touch models, please refer to the driver instruction file available in the downloads section.
Through-Glass	6mm

03 INTERFACES / CONNECTORS / CONTROLS

Analog signal input	VGA x1
Digital signal input	HDMI x1 DisplayPort x1
HDCP	yes

04 FEATURES

Extra	Touch Through-Glass, Anti-glare coating
Kiosk mode	yes
Max. non-stop operating time	24/7
Glass hardness	6H
60950 Ball drop test	yes
Impact testing	IK-7
Water and dust protection	IP65 (front)
Housing (bezel)	metal

Water tight seal	yes
OSD key lock	yes

05 GENERAL

OSD languages	EN, DE, FR, ES, IT, CN, JP
Control buttons	Menu, Scroll up/ Brightness, Scroll down/ Contrast, Select, Power
User controls	contrast, brightness, auto adjust, H.position, V.position, phase, OSD H.position, OSD V.position, OSD timeout, reset, input select, OSD language, colour temperature, sharpness, touch switch (normal, glove, through-glass)
Plug&Play	DDC2B

06 MECHANICAL

Orientation	landscape, portrait
Fanless design	yes
VESA mounting	200 x 200mm
Cable management system	cable cover
Operation temperature range	0°C - 40°C
Storage temperature range	- 20°C - 60°C
MTBF	50000 hours

07 ACCESSORIES INCLUDED

Cables	power, USB, HDMI
Guides	quick start guide, safety guide
Cable cover	yes

08 POWER MANAGEMENT

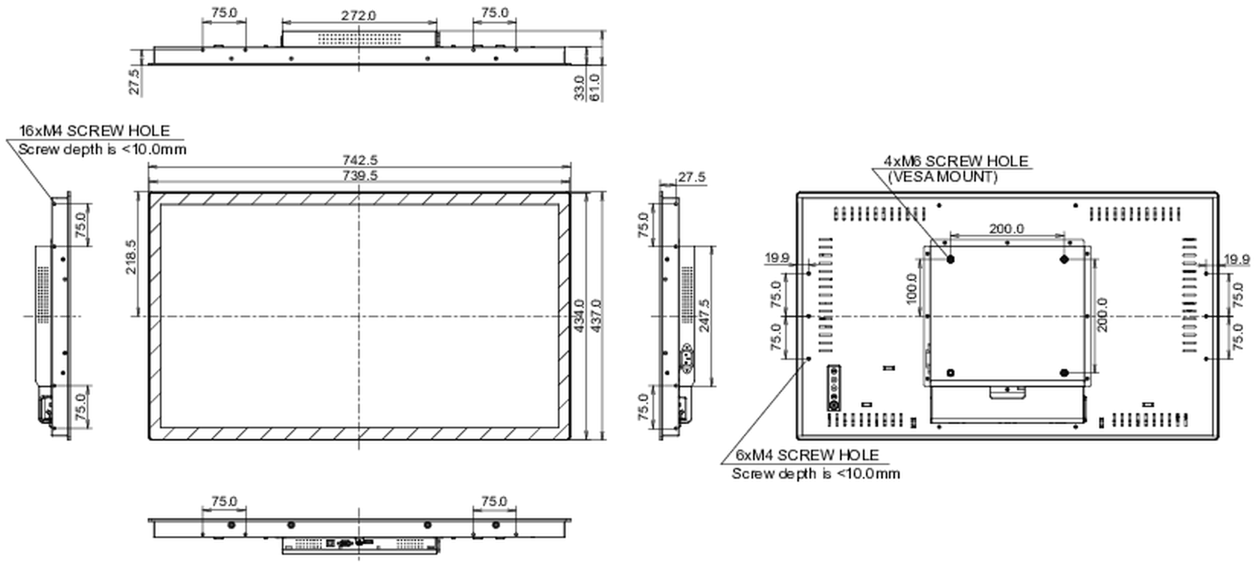
Power supply unit	internal
Power supply	AC 100 - 240V, 50/60Hz
Power usage	32W typical, 1.5W stand by, 0.3W off mode

09 SUSTAINABILITY

Energy efficiency class (Regulation (EU) 2017/1369)	F
REACH SVHC	above 0.1%: Lead

10 DIMENSIONS / WEIGHT

Product dimensions W x H x D	745.5 x 437 x 61mm
Box dimensions W x H x D	890 x 630 x 155mm
Weight (without box)	10kg
Weight (with box)	12.85kg
EAN code	4948570123674



All trademarks and registered trademarks acknowledged. E & O E. Specification subject to change without notice. All LCD's comply with ISO-9241-307:2008 in connection with pixel defects.

© IYAMA CORPORATION. ALL RIGHTS RESERVED