



Touch Screen Driver User Manual (For Mac OS X)

Beijing IRTOUCHSYSTEMS Technology Co., Ltd

Directory

COPYRIGHT	1
CONTACT INFORMATION	2
1 INSTALLING DRIVER	3
2 TOUCHSCREEN CONTROL PANEL	4
2.1 MAPPING AND CALIBRATION	6
2.1.1 <i>Mapping</i>	6
2.1.2 <i>Calibration</i>	6
2.1.3 <i>Reset</i>	8
2.2 SETTINGS.....	9
2.2.1 <i>Modes</i>	11
2.2.2 <i>Performance</i>	11
2.2.3 <i>Calibration</i>	12
2.2.4 <i>Touch Status</i>	12
2.2.5 <i>Right Click</i>	12
2.2.6 <i>Double Click</i>	13
2.2.7 <i>Touch Sensitivity</i>	13
2.2.8 <i>About</i>	13
3 UNINSTALLATION	15

Copyright

PLEASE READ THIS AGREEMENT CAREFULLY BEFORE USING THE DRIVER.

THE PROGRAM WILL BE LICENSED TO YOU ONLY IF YOU FIRST ACCEPT THE TERMS OF THIS AGREEMENT. BY USING THE PROGRAM YOU AGREE TO THESE TERMS. IF YOU DO NOT AGREE TO THE TERMS OF THIS AGREEMENT, PROMPTLY RETURN THE UNUSED PROGRAM TO THE PARTY FROM WHOM YOU ACQUIRED IT TO RECEIVE A REFUND OF THE AMOUNT YOU PAID.

The Program is owned by Beijing IRTOUCHSYSTEMS Technology CO., LTD. (IRTOUCH) or one of its DISTRIBUTORS (IRTOUCH) or supplier, and is copyrighted and licensed, not sold.

The term "Program" means the original program and all whole or partial copies of it. A Program consists of machine-readable instructions, its components, data, audio-visual content (such as images, text, recordings, or pictures), and related licensed materials.

1. LICENSE

IRTOUCH grants you a nonexclusive license to use the Program.

You may 1) use the Program to the extent of authorizations you have acquired and 2) make and install copies to support the level of use authorized, providing you reproduce the copyright notice and any other legends of ownership on each copy, or partial copy, of the Program.

If you acquire this Program as a program upgrade, your authorization to use the Program from which you upgraded is terminated.

You will ensure that anyone who uses the Program does so only in compliance with the terms of this Agreement.

You may not 1) use, copy, modify, or distribute the Program except as provided in this Agreement; 2) reverse assemble, reverse compile, or otherwise translate the Program except as specifically permitted by law without the possibility of contractual waiver; or 3) sublicense, rent, or lease the Program.

TRANSFER OF RIGHTS AND OBLIGATIONS

You may transfer all your license rights and obligations under the written permission by IRTOUCH for the Program to another party. The transfer of your license rights and obligations terminates your authorization to use the Program.

2. GENERAL

Nothing in this Agreement affects any statutory rights of consumers that cannot be waived or limited by contract.

IRTOUCH may terminate your license if you fail to comply with the terms of this Agreement. If IRTOUCH does so, you must immediately destroy the Program and all copies you made of it.

ANY ACTION OF INFRINGING THE COPYRIGHT AGREEMENT WILL BE SUED FOR.

3. TRADEMARK ACKNOWLEDGEMENTS

IRTOUCH is registered trademark by Beijing IRTOUCHSYSTEMS Technology Co., Ltd, Any company or individual will not have right to use, copy, modify, excerpt, sale the all parts of the brand or without any written-permission by IRTOUCHSYSTEMS.

Contact Information

If you have any other enquiries or questions, please feel free to contact with us:

Beijing IRTOUCHSYSTEMS Technology Co., Ltd

Address: 4th Floor, M8 Building, NO 1 East Jiuxianqiao Road, Chaoyang District, Beijing, P.R.China

Code: 100015

Customer server line: +86-10-84573457

E-mail: service@irtouch.com

Technical support line: +86-10-84573166 +86-10-84571219

E-mail: tech@irtouch.com

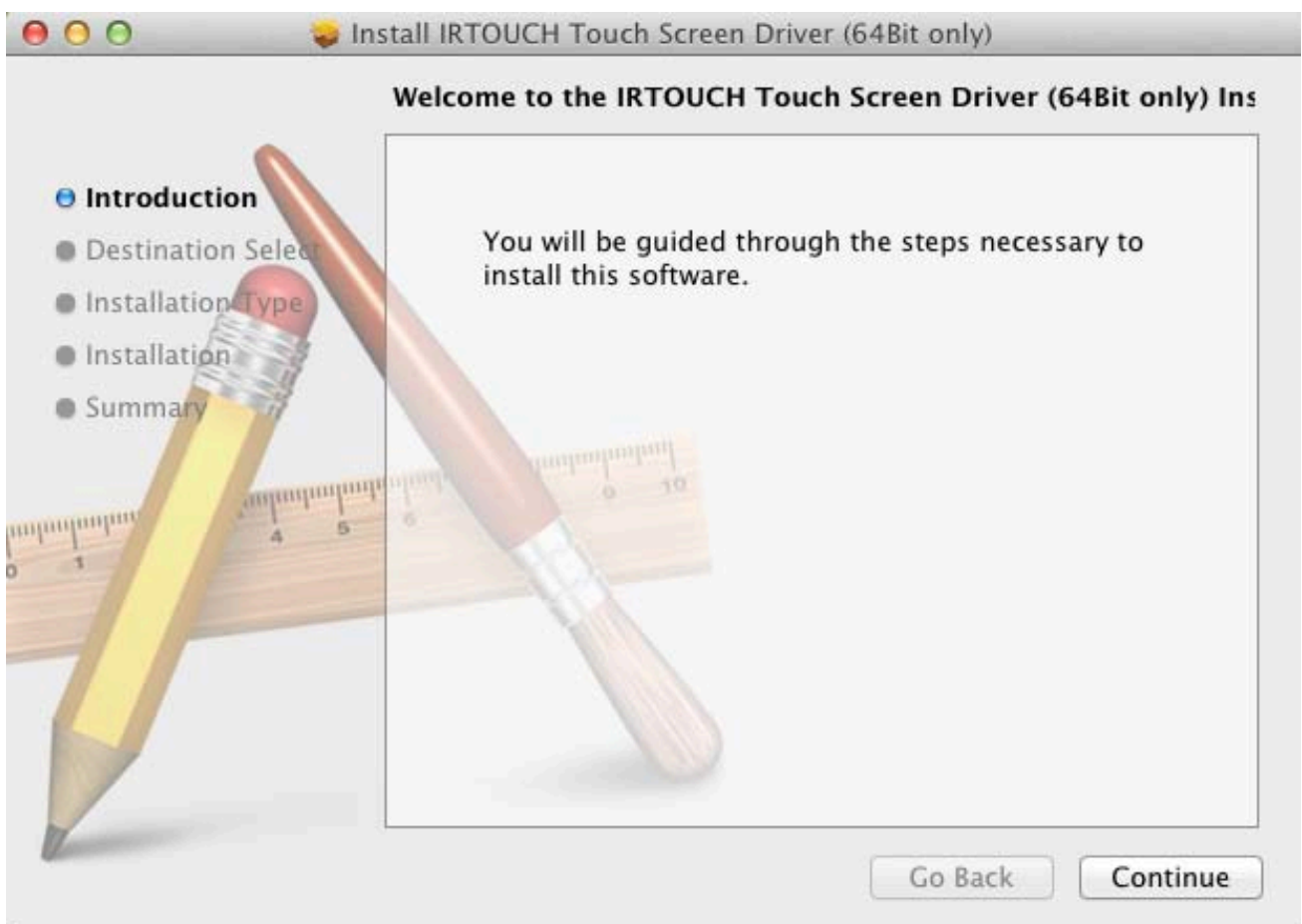
Website: www.irtouch.com

1 Installing Driver

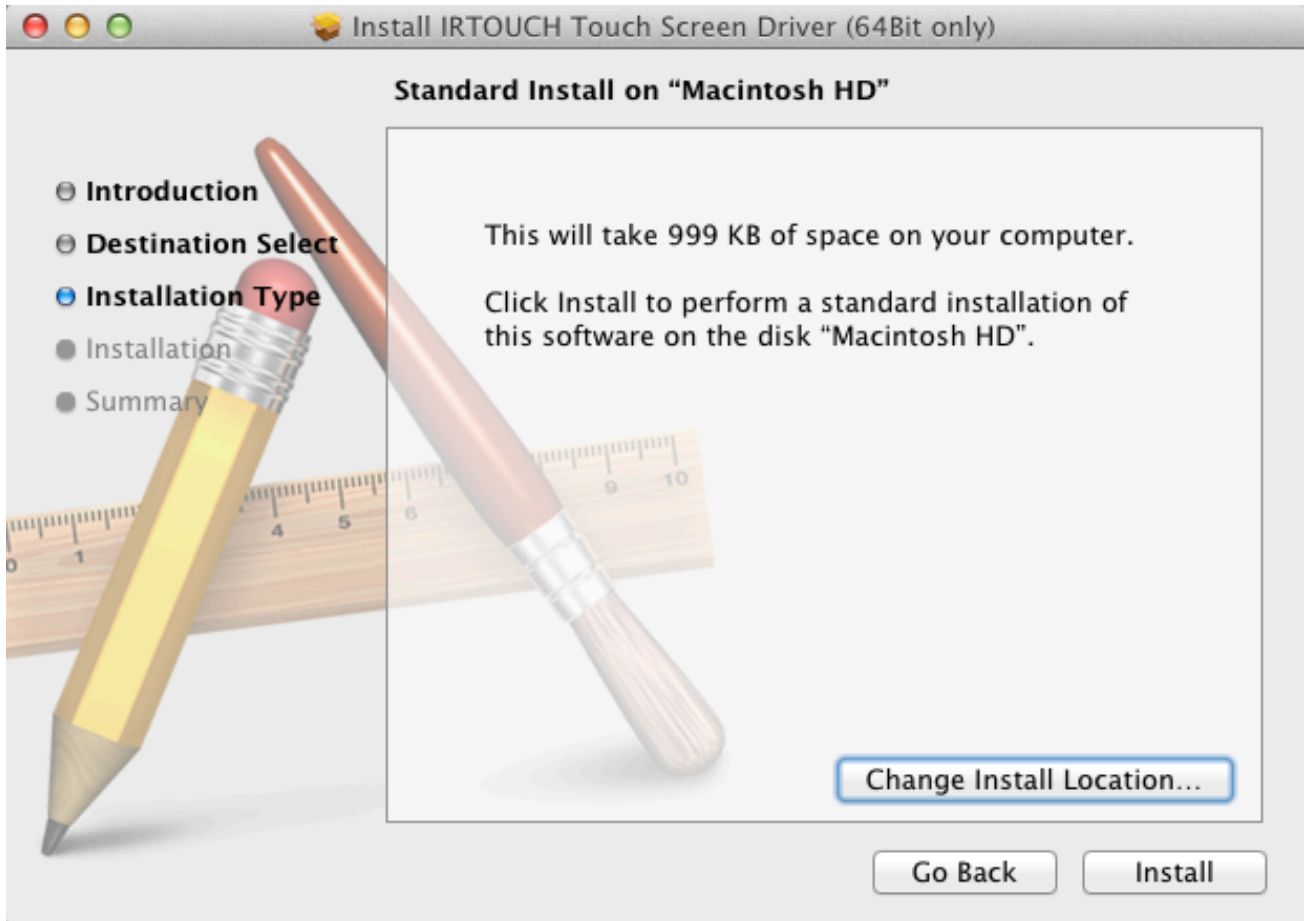


Step1 : Double-click driver installation package “IRTOUCH Touchscreen Driver X.zip”, please click button to install driver installation “IRTOUCH TouchScreen Driver X.pkg”, then into the driver installation interface;

Step2 : Click [**Continue**] to install the driver, as shown in:



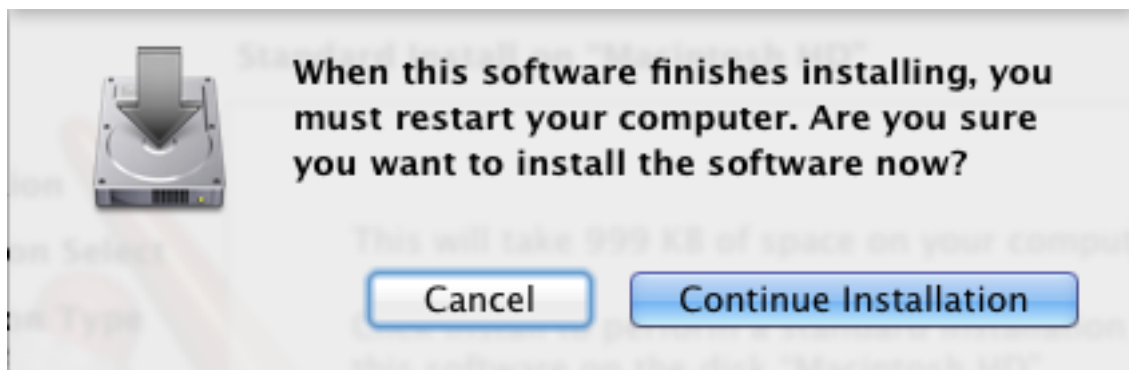
Step3 : Click [**Install**] to perform a standard installation, and you can click [**Change Install Location...**] to select another installation path, as shown in:



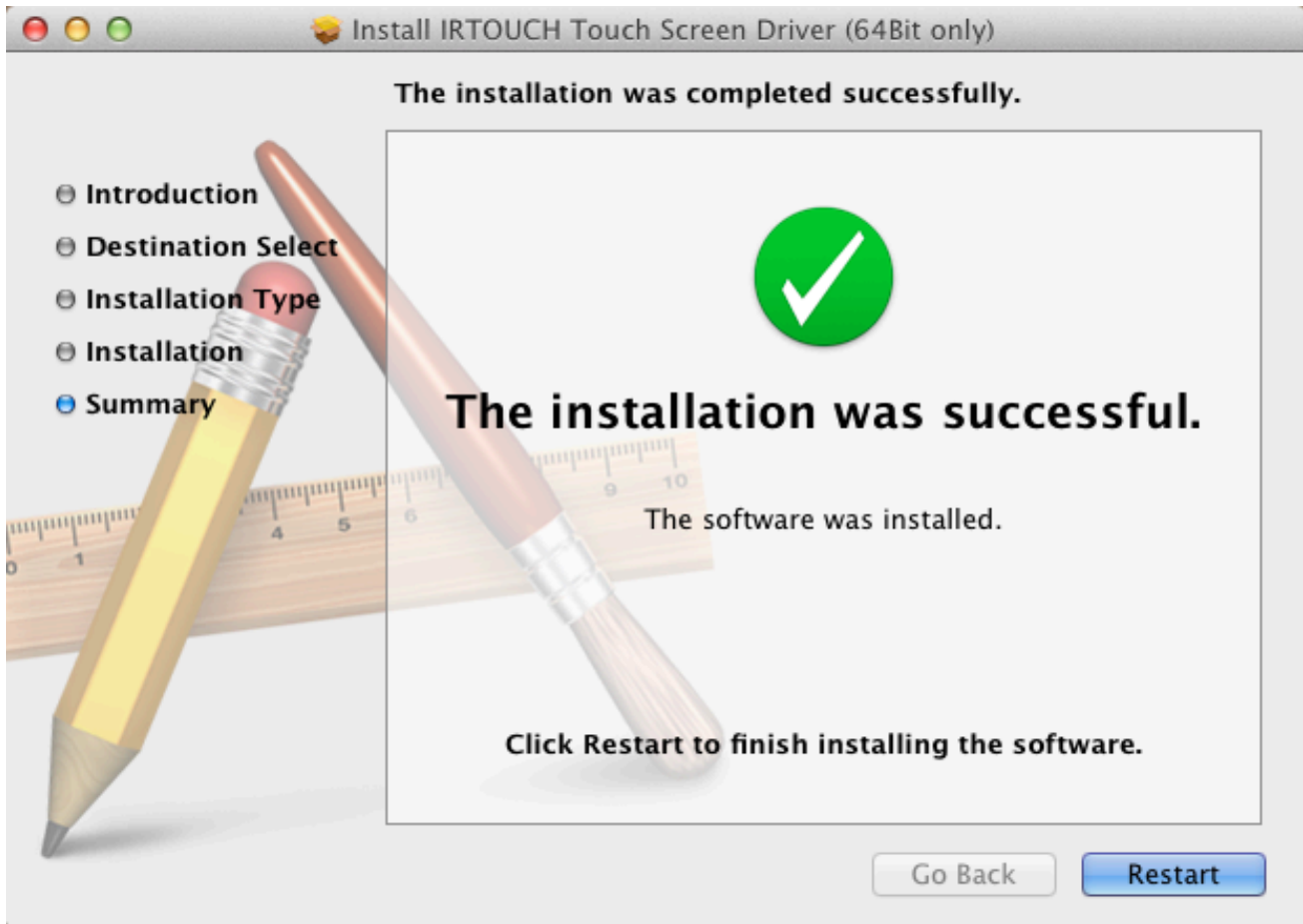
Step4 : Type your password and then click [**Install Software**], as shown in:



Step5 : Click [**Continue Installation**], as shown in:



Step6 : Installation was successful and you need to restart your computer, click [**Restart**] to finish installing the driver, as shown in:



Step7 : After you restart the computer, connect the touch screen to your computer. Now the new hardware has been installed and ready to use.

2 TouchScreen Control Panel




Click “TouchScreen Control Panel” button in “Application”. If not connected touch screen, then pop up the following interface:



Otherwise, if connected touch screen, then open the TouchScreen Control Panel, as shown in:

IRTOUCH Touch Screen Control Platform



Version: 15.1.3.0004

More... ◀

Serial No.	Firmware	Monitor	CalibStatus
E15D03U-A01-01-1212-0001265	3.5.0738	0	NO




Calibration -- Calibrate the device on the monitor.



Mapping -- Make pair with the device and the monitor.



Reset -- Clean up the calibrate data.



Settings -- Default settings and other settings.



Exit

2.1 Mapping and Calibration

2.1.1 Mapping

Currently, Mapping feature of this version is not available.

2.1.2 Calibration

The method is to choose one touch screen from the list, click [**Calibration**] and the calibration window will appear. Calibration is done by clicking the bull's-eye center one after the other, as shown in:



Note:

1. When calibrating, to get better calibration result, the user's head should keep still;
2. The calibration coordinates are determined by the point where the finger leaves the touchscreen;
3. The bull's eye is only for reference, it's not necessarily the optimal calibration point, the user should aim the bull's eye the first calibration, if the result is not satisfying, the user can recalibrate and deliberately move slightly apart from the bull's eye.

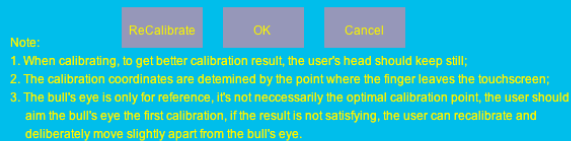
When calibrating each point, you need to calibrate within 30 seconds. Otherwise program will automatically terminate and exit. Number on the screen prompts the remaining time.

There are two optional ways of calibration: 4 points and 25 points. See “2.2.3 Calibration Settings” for reference.

The mode of “Click on Release” (see “2.2.1 Modes” for reference) is used when calibrating. So you can move the touch object without lift until hitting the center of the bull's-eye center.

When calibrating, you can press “Esc” key to exit.

After calibration, three buttons appear, as shown in:



- ① [**ReCalibrate**] : to calibrate again;
- ② [**OK**] : to save the calibration data and exit;
- ③ [**Cancel**] : to exit without saving the calibration data;

You need to click within 30 seconds. Otherwise program will automatically terminate and exit without saving the calibration data.

After calibration, “**CalibStatus**” item of the touch screen selected in the list will become “**Yes**”.

2.1.3 Reset

If you choose a touch screen from the list and click [**Reset**], it means that you want to abandon the previous calibration data and use the default calibration data. After this, “**CalibStatus**” item of the touch screen selected in the list will become “**No**”.

2.2 Settings

Click the [**Settings**] button on the TouchScreen Control Panel, the “Settings” panel will appear, as shown in:

Settings

Adjust the configuration of the device

Modes

☐ Click On Touch
☐ Click On Release
☒ Mouse Emulation

Performance

Click Area: smalllarge

Smoothness: lowhigh

Calibration

☒ 4 points ☐ Full screen
☐ 25 points ☐ Region screen

Touch Status

Disable Touch

Right Click

☒ Enable Right Click

Time: shortlong

Area: smalllarge

Double Click

Time: shortlong

Area: smalllarge

Touch Sensitivity

☒ Enable Touch Sensitivity

Time: shortlong

Area: smalllarge

Default Setting

Apply

Ok

Cancel

Notes: For the detailed descriptions of those functions, you can refer to the introduction of the rest of this chapter. You can flexibly set related parameters according to hardware statuses and external factors, so as to achieve the best practical effect. Recommended setting is Default Setting.

2.2.1 Modes

There are three touch modes:

① **Click on Touch:**

Mouse click event happens immediately at the time when the touch object contacts the touch screen. The mode is applied only to click objects, but not to drag objects. Touch screen in this mode responds fastest and are usually used for clicking big buttons.

② **Click on Release:**

Mouse click event happens at the time when the touch object leaves the touch screen. You can move the touch object without lift until you accurately hitting the object that you want to click. Touch screen in this mode are usually used for clicking small buttons or clicking hyperlinks on a Web page, such as POS and Web applications.

③ **Mouse Emulation:**

Default mode of the driver. Full emulation of mouse functions, including left-click, move, lift, and drag objects. This mode is very suitable to the following applications: writing, drawing, and dragging.

2.2.2 Performance

- ① **Click Area:** To adjust the size of the region in that the touch screen does not trigger the mouse-down event. It's adjusted to the minimum area in order to achieve the best effects in writing or drawing.
- ② **Smoothness:** To adjust the value of the smoothness by dragging the slider; (This function only supports the optical touch screen.)

Tips: The higher value of the smoothness, the better effect of writing or drawing, but the higher requirement of the computer system configuration. The lower value of the smoothness, the faster of writing or drawing. It is recommended that you use the default setting.

2.2.3 Calibration

There are two optional ways of calibration:

- ① **4 Points** : 4 points calibration;
- ② **25 Points** : 25 points calibration;

Calibration area: not available, the default is Full screen.

- ③ **Full screen**: Full screen calibration;
- ④ **Region screen**: Region screen calibration;

2.2.4 Touch Status

Click “Enable Touch/Disable touch” button to enable or disable touch function. The default is touch function enabled.

2.2.5 Right Click

Enable (default) /disable right click function. After check the option, when you click and press on any area of the screen for a while, the right-click pop-up menu will appear. This function is only available in “Mouse Emulation” mode.

- ① **Time** : To set the pop-up time, the higher the value, the longer the pop-up time.
- ② **Area** : To adjust the size of the effective residence area of the touch plane, the higher the value, the larger the size of the effective residence area.

After setting, right-click menu will pop up so long as the touch object contacts the screen for a while

(**Time**) within the range (**Area**).

2.2.6 Double Click

- ① **Time** : To adjust the time interval between two clicks, the higher the value, the longer the time interval between two clicks.
- ② **Area** : To adjust the size of the range of two clicks, the higher the value, the larger the size of the effective residence area.

After setting, double-click action is triggered so long as the touch object contacts the screen in setting time (**Time**) and range (**Area**).

2.2.7 Touch Sensitivity

Enable (default) /disable touch sensitivity. After check the option, you can aside a certain time for the touch object during lift and drop, and you can also set an allowed touch scope of residence of the touch object. (Not available)

- ① **Time** : To adjust the number of touch delay, the higher the value, the longer the delay time.
- ② **Area** : To adjust the size of the effective residence area of the touch plane, the higher the value, the larger the size of the effective residence area.

2.2.8 About

Click More... to open the About dialog that displays the company information, LOGO and so on, as shown in:



3 Uninstallation

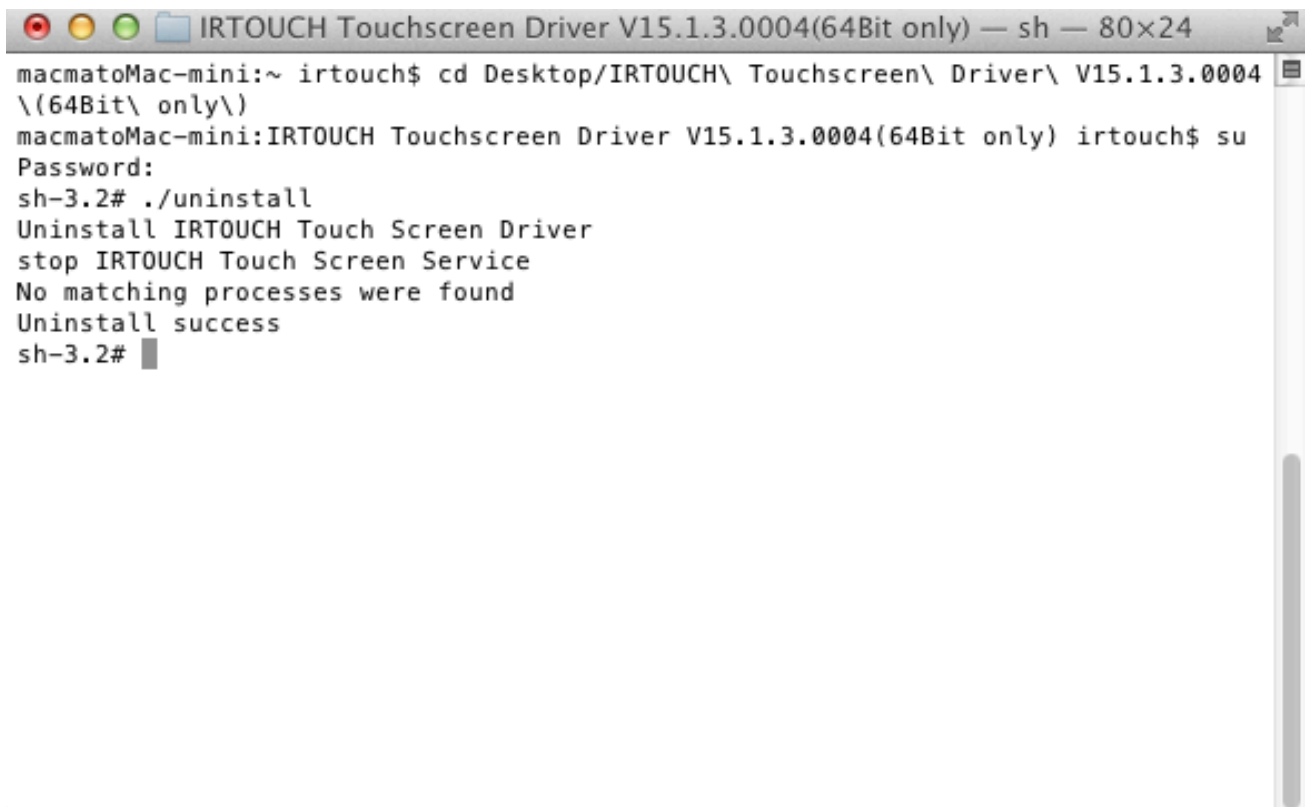
Step1 : Open a terminal window;

Step2 : Enter into the folder of the driver installation;

Step3 : Run command “sudo -s”, then type your password;

Step4 : Run command “./uninstall” to begin to uninstall the driver;

Step5 : Driver uninstallation is complete, as shown in:



```

macmatoMac-mini:~ irtouch$ cd Desktop/IRTOUCH\ Touchscreen\ Driver\ V15.1.3.0004
\ (64Bit\ only\)
macmatoMac-mini:IRTOUCH Touchscreen Driver V15.1.3.0004(64Bit only) irtouch$ su
Password:
sh-3.2# ./uninstall
Uninstall IRTOUCH Touch Screen Driver
stop IRTOUCH Touch Screen Service
No matching processes were found
Uninstall success
sh-3.2#
  
```